

Legend

- Subdivisions
- Public Access
- Hazards
- Original Roanoke River Bed
- Mile Markers
- Non-Lateral Marks
- Boat Barriers
- Islands
- Shoals
- Leesville Marinas

AEP Facilities

- Fishing Pier
- Picnic Area
- Visitors Center
- Public Ramps


Range

- 566'
- 576'
- 586'
- 596'
- 610'
- Aprox. 613'

Counties

- Bedford County
- Campbell County
- Pittsylvania County

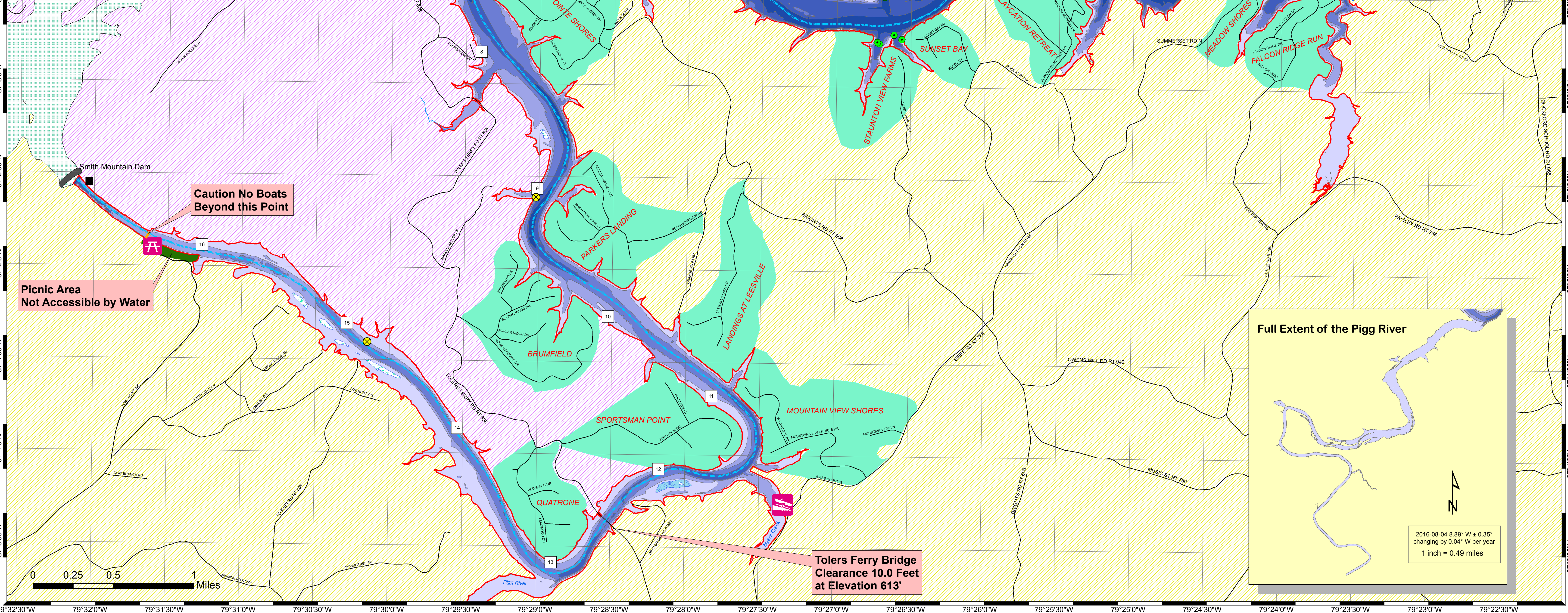
Leesville Lake



APPALACHIAN POWER
An AEP Company
BOUNDLESS ENERGY™

leesvillelake.org
LVL
Leesville Lake, VA

This map was prepared in September of 2017 based upon data collected in 2005 and may not properly represent current conditions. This map is being provided for informational purposes only.
Copyright © 2017 (Appalachian Power Company) All rights reserved.



Caution No Boats Beyond this Point

Picnic Area Not Accessible by Water

Caution No Boats Beyond This Point

Downstream Fishing Access

Downstream Canoe Access

Tolars Ferry Bridge Clearance 10.0 Feet at Elevation 613'

